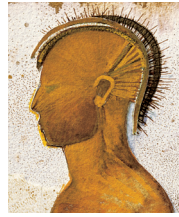


# DOMUS AUREA DOMUS AUREA DOMUS AUREA

2014 Cabernet Sauvignon

In the glass Domus Aurea is a deep intense dark, ruby purple with Cassis, blackberries, mineral and balsamic notes on the nose. It is concentrated, but fresh on the palate with fine grained tannins finishing big with wild berries, spices, tobacco and the classic balsamic notes.



**94 pts**  
**VINOUS**  
*(Stephen Tanzer)*



GLOBAL VINEYARD IMPORTERS  
BERKELEY, CA 510-527-5877  
WWW.GLOBALVINEYARD.COM

2014 Cabernet Sauvignon

In the glass Domus Aurea is a deep intense dark, ruby purple with Cassis, blackberries, mineral and balsamic notes on the nose. It is concentrated, but fresh on the palate with fine grained tannins finishing big with wild berries, spices, tobacco and the classic balsamic notes.



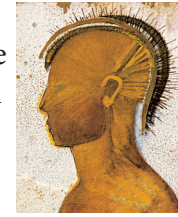
**94 pts**  
**VINOUS**  
*(Stephen Tanzer)*



GLOBAL VINEYARD IMPORTERS  
BERKELEY, CA 510-527-5877  
WWW.GLOBALVINEYARD.COM

2014 Cabernet Sauvignon

In the glass Domus Aurea is a deep intense dark, ruby purple with Cassis, blackberries, mineral and balsamic notes on the nose. It is concentrated, but fresh on the palate with fine grained tannins finishing big with wild berries, spices, tobacco and the classic balsamic notes.



**94 pts**  
**VINOUS**  
*(Stephen Tanzer)*

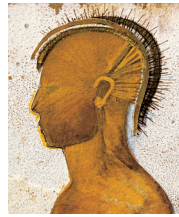


GLOBAL VINEYARD IMPORTERS  
BERKELEY, CA 510-527-5877  
WWW.GLOBALVINEYARD.COM

# DOMUS AUREA DOMUS AUREA DOMUS AUREA

2014 Cabernet Sauvignon

In the glass Domus Aurea is a deep intense dark, ruby purple with Cassis, blackberries, mineral and balsamic notes on the nose. It is concentrated, but fresh on the palate with fine grained tannins finishing big with wild berries, spices, tobacco and the classic balsamic notes.



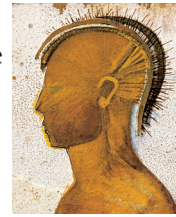
**94 pts**  
**VINOUS**  
*(Stephen Tanzer)*



GLOBAL VINEYARD IMPORTERS  
BERKELEY, CA 510-527-5877  
WWW.GLOBALVINEYARD.COM

2014 Cabernet Sauvignon

In the glass Domus Aurea is a deep intense dark, ruby purple with Cassis, blackberries, mineral and balsamic notes on the nose. It is concentrated, but fresh on the palate with fine grained tannins finishing big with wild berries, spices, tobacco and the classic balsamic notes.



**94 pts**  
**VINOUS**  
*(Stephen Tanzer)*



GLOBAL VINEYARD IMPORTERS  
BERKELEY, CA 510-527-5877  
WWW.GLOBALVINEYARD.COM

2014 Cabernet Sauvignon

In the glass Domus Aurea is a deep intense dark, ruby purple with Cassis, blackberries, mineral and balsamic notes on the nose. It is concentrated, but fresh on the palate with fine grained tannins finishing big with wild berries, spices, tobacco and the classic balsamic notes.



**94 pts**  
**VINOUS**  
*(Stephen Tanzer)*



GLOBAL VINEYARD IMPORTERS  
BERKELEY, CA 510-527-5877  
WWW.GLOBALVINEYARD.COM