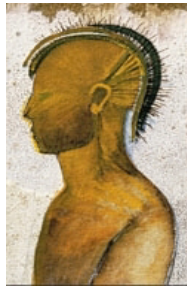


Domus Aurea 2008 Cabernet Sauvignon



The 2008 Domus Aurea has a deep ruby color and an elegant, spicy nose with hints of truffle and black cherry. Pairs well with grilled lamb, mushrooms and sweet red peppers.

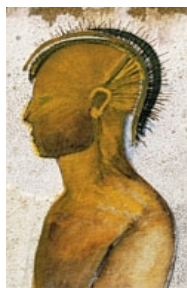


93 points! From Robert's Parker's *Wine Advocate*, December 2012.
"Very impressive... well balanced with grace and poise."

IMPORTED BY GLOBAL VINEYARD IMPORTERS
WWW.GLOBALVINEYARD.COM

DOMUS AURREA

Domus Aurea 2008 Cabernet Sauvignon



The 2008 Domus Aurea has a deep ruby color and an elegant, spicy nose with hints of truffle and black cherry. Pairs well with grilled lamb, mushrooms and sweet red peppers.

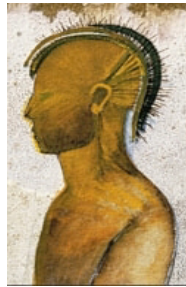


93 points! From Robert's Parker's *Wine Advocate*, December 2012.
"Very impressive... well balanced with grace and poise."

IMPORTED BY GLOBAL VINEYARD IMPORTERS
WWW.GLOBALVINEYARD.COM

DOMUS AURREA

Domus Aurea 2008 Cabernet Sauvignon



The 2008 Domus Aurea has a deep ruby color and an elegant, spicy nose with hints of truffle and black cherry. Pairs well with grilled lamb, mushrooms and sweet red peppers.

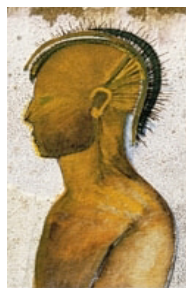


93 points! From Robert's Parker's *Wine Advocate*, December 2012.
"Very impressive... well balanced with grace and poise."

IMPORTED BY GLOBAL VINEYARD IMPORTERS
WWW.GLOBALVINEYARD.COM

DOMUS AURREA

Domus Aurea 2008 Cabernet Sauvignon



The 2008 Domus Aurea has a deep ruby color and an elegant, spicy nose with hints of truffle and black cherry. Pairs well with grilled lamb, mushrooms and sweet red peppers.



93 points! From Robert's Parker's *Wine Advocate*, December 2012.
"Very impressive... well balanced with grace and poise."

IMPORTED BY GLOBAL VINEYARD IMPORTERS
WWW.GLOBALVINEYARD.COM

DOMUS AURREA

Domus Aurea 2008 Cabernet Sauvignon



The 2008 Domus Aurea has a deep ruby color and an elegant, spicy nose with hints of truffle and black cherry. Pairs well with grilled lamb, mushrooms and sweet red peppers.

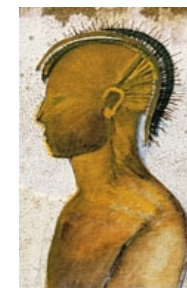


93 points! From Robert's Parker's *Wine Advocate*, December 2012.
"Very impressive... well balanced with grace and poise."

IMPORTED BY GLOBAL VINEYARD IMPORTERS
WWW.GLOBALVINEYARD.COM

DOMUS AURREA

Domus Aurea 2008 Cabernet Sauvignon



The 2008 Domus Aurea has a deep ruby color and an elegant, spicy nose with hints of truffle and black cherry. Pairs well with grilled lamb, mushrooms and sweet red peppers.



93 points! From Robert's Parker's *Wine Advocate*, December 2012.
"Very impressive... well balanced with grace and poise."

IMPORTED BY GLOBAL VINEYARD IMPORTERS
WWW.GLOBALVINEYARD.COM

DOMUS AURREA