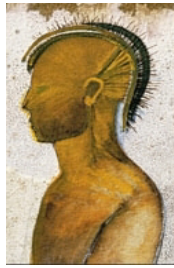


Domus Aurea 2009 Cabernet Sauvignon



The 2009 Domus Aurea has a deep ruby color and an elegant, spicy nose with hints of truffle and black cherry.

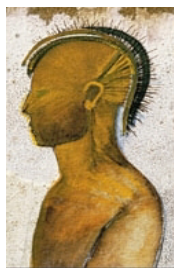
Pairs well with grilled lamb, mushrooms and sweet red peppers.

91 points! *Wine and Spirits*, June 2013: "Scents of spice, cherries, herbs... ripe aromas and sweet liqueur-like scents. Pour it with lamb."

IMPORTED BY GLOBAL VINEYARD IMPORTERS
WWW.GLOBALVINEYARD.COM

DOMUS AURREA

Domus Aurea 2009 Cabernet Sauvignon



The 2009 Domus Aurea has a deep ruby color and an elegant, spicy nose with hints of truffle and black cherry.

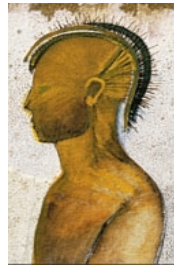
Pairs well with grilled lamb, mushrooms and sweet red peppers.

91 points! *Wine and Spirits*, June 2013: "Scents of spice, cherries, herbs... ripe aromas and sweet liqueur-like scents. Pour it with lamb."

IMPORTED BY GLOBAL VINEYARD IMPORTERS
WWW.GLOBALVINEYARD.COM

DOMUS AURREA

Domus Aurea 2009 Cabernet Sauvignon



The 2009 Domus Aurea has a deep ruby color and an elegant, spicy nose with hints of truffle and black cherry.

Pairs well with grilled lamb, mushrooms and sweet red peppers.

91 points! *Wine and Spirits*, June 2013: "Scents of spice, cherries, herbs... ripe aromas and sweet liqueur-like scents. Pour it with lamb."

IMPORTED BY GLOBAL VINEYARD IMPORTERS
WWW.GLOBALVINEYARD.COM

DOMUS AURREA

Domus Aurea 2009 Cabernet Sauvignon



The 2009 Domus Aurea has a deep ruby color and an elegant, spicy nose with hints of truffle and black cherry.

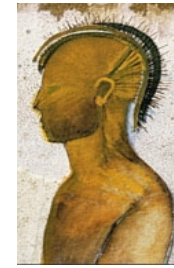
Pairs well with grilled lamb, mushrooms and sweet red peppers.

91 points! *Wine and Spirits*, June 2013: "Scents of spice, cherries, herbs... ripe aromas and sweet liqueur-like scents. Pour it with lamb."

IMPORTED BY GLOBAL VINEYARD IMPORTERS
WWW.GLOBALVINEYARD.COM

DOMUS AURREA

Domus Aurea 2009 Cabernet Sauvignon



The 2009 Domus Aurea has a deep ruby color and an elegant, spicy nose with hints of truffle and black cherry.

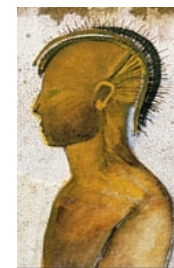
Pairs well with grilled lamb, mushrooms and sweet red peppers.

91 points! *Wine and Spirits*, June 2013: "Scents of spice, cherries, herbs... ripe aromas and sweet liqueur-like scents. Pour it with lamb."

IMPORTED BY GLOBAL VINEYARD IMPORTERS
WWW.GLOBALVINEYARD.COM

DOMUS AURREA

Domus Aurea 2009 Cabernet Sauvignon



The 2009 Domus Aurea has a deep ruby color and an elegant, spicy nose with hints of truffle and black cherry.

Pairs well with grilled lamb, mushrooms and sweet red peppers.

91 points! *Wine and Spirits*, June 2013: "Scents of spice, cherries, herbs... ripe aromas and sweet liqueur-like scents. Pour it with lamb."

IMPORTED BY GLOBAL VINEYARD IMPORTERS
WWW.GLOBALVINEYARD.COM

DOMUS AURREA