

Domus Aurea 2010 Cabernet Sauvignon



The 2010 Domus Aurea has a deep ruby color and an elegant, spicy nose with hints of truffle and black cherry.

Pairs well with grilled lamb, mushrooms and sweet red peppers.

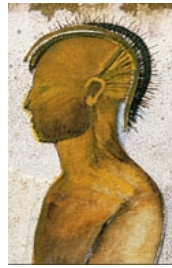
92 points! "Aromas of green chili and dark fruits with hints of black licorice. Full body, silky tannins and a beautiful finish."

—James Suckling Report, Aug. 2014

IMPORTED BY GLOBAL VINEYARD IMPORTERS
WWW.GLOBALVINEYARD.COM

DOMUS AURREA

Domus Aurea 2010 Cabernet Sauvignon



The 2010 Domus Aurea has a deep ruby color and an elegant, spicy nose with hints of truffle and black cherry.

Pairs well with grilled lamb, mushrooms and sweet red peppers.

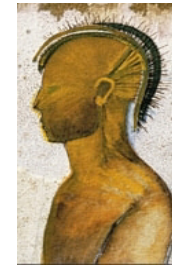
92 points! "Aromas of green chili and dark fruits with hints of black licorice. Full body, silky tannins and a beautiful finish."

—James Suckling Report, Aug. 2014

IMPORTED BY GLOBAL VINEYARD IMPORTERS
WWW.GLOBALVINEYARD.COM

DOMUS AURREA

Domus Aurea 2010 Cabernet Sauvignon



The 2010 Domus Aurea has a deep ruby color and an elegant, spicy nose with hints of truffle and black cherry.

Pairs well with grilled lamb, mushrooms and sweet red peppers.

92 points! "Aromas of green chili and dark fruits with hints of black licorice. Full body, silky tannins and a beautiful finish."

—James Suckling Report, Aug. 2014

IMPORTED BY GLOBAL VINEYARD IMPORTERS
WWW.GLOBALVINEYARD.COM

DOMUS AURREA

Domus Aurea 2010 Cabernet Sauvignon



The 2010 Domus Aurea has a deep ruby color and an elegant, spicy nose with hints of truffle and black cherry.

Pairs well with grilled lamb, mushrooms and sweet red peppers.

92 points! "Aromas of green chili and dark fruits with hints of black licorice. Full body, silky tannins and a beautiful finish."

—James Suckling Report, Aug. 2014

IMPORTED BY GLOBAL VINEYARD IMPORTERS
WWW.GLOBALVINEYARD.COM

DOMUS AURREA

Domus Aurea 2010 Cabernet Sauvignon



The 2010 Domus Aurea has a deep ruby color and an elegant, spicy nose with hints of truffle and black cherry.

Pairs well with grilled lamb, mushrooms and sweet red peppers.

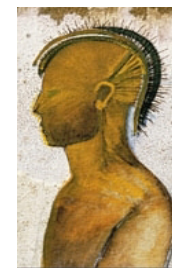
92 points! "Aromas of green chili and dark fruits with hints of black licorice. Full body, silky tannins and a beautiful finish."

—James Suckling Report, Aug. 2014

IMPORTED BY GLOBAL VINEYARD IMPORTERS
WWW.GLOBALVINEYARD.COM

DOMUS AURREA

Domus Aurea 2010 Cabernet Sauvignon



The 2010 Domus Aurea has a deep ruby color and an elegant, spicy nose with hints of truffle and black cherry.

Pairs well with grilled lamb, mushrooms and sweet red peppers.

92 points! "Aromas of green chili and dark fruits with hints of black licorice. Full body, silky tannins and a beautiful finish."

—James Suckling Report, Aug. 2014

IMPORTED BY GLOBAL VINEYARD IMPORTERS
WWW.GLOBALVINEYARD.COM

DOMUS AURREA