

Domus Aurea 2010 Cabernet Sauvignon



One of the great wines of Chile, 2010 Domus Aurea has a deep ruby color and an elegant, spicy nose with hints of truffle and black cherry.

Pairs well with grilled lamb, mushrooms and sweet red peppers.

▶ 92 pts

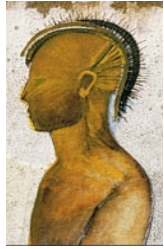
JAMESSUCKLING.COM



GLOBAL VINEYARD IMPORTERS
BERKELEY, CA 510-527-5877
WWW.GLOBALVINEYARD.COM

DOMUS AURREA

Domus Aurea 2010 Cabernet Sauvignon



One of the great wines of Chile, 2010 Domus Aurea has a deep ruby color and an elegant, spicy nose with hints of truffle and black cherry.

Pairs well with grilled lamb, mushrooms and sweet red peppers.

▶ 92 pts

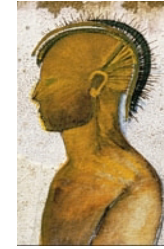
JAMESSUCKLING.COM



GLOBAL VINEYARD IMPORTERS
BERKELEY, CA 510-527-5877
WWW.GLOBALVINEYARD.COM

DOMUS AURREA

Domus Aurea 2010 Cabernet Sauvignon



One of the great wines of Chile, 2010 Domus Aurea has a deep ruby color and an elegant, spicy nose with hints of truffle and black cherry.

Pairs well with grilled lamb, mushrooms and sweet red peppers.

▶ 92 pts

JAMESSUCKLING.COM



GLOBAL VINEYARD IMPORTERS
BERKELEY, CA 510-527-5877
WWW.GLOBALVINEYARD.COM

DOMUS AURREA

Domus Aurea 2010 Cabernet Sauvignon



One of the great wines of Chile, 2010 Domus Aurea has a deep ruby color and an elegant, spicy nose with hints of truffle and black cherry.

Pairs well with grilled lamb, mushrooms and sweet red peppers.

▶ 92 pts

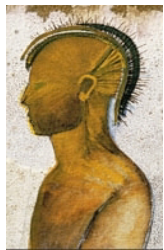
JAMESSUCKLING.COM



GLOBAL VINEYARD IMPORTERS
BERKELEY, CA 510-527-5877
WWW.GLOBALVINEYARD.COM

DOMUS AURREA

Domus Aurea 2010 Cabernet Sauvignon



One of the great wines of Chile, 2010 Domus Aurea has a deep ruby color and an elegant, spicy nose with hints of truffle and black cherry.

Pairs well with grilled lamb, mushrooms and sweet red peppers.

▶ 92 pts

JAMESSUCKLING.COM



GLOBAL VINEYARD IMPORTERS
BERKELEY, CA 510-527-5877
WWW.GLOBALVINEYARD.COM

DOMUS AURREA

Domus Aurea 2010 Cabernet Sauvignon



One of the great wines of Chile, 2010 Domus Aurea has a deep ruby color and an elegant, spicy nose with hints of truffle and black cherry.

Pairs well with grilled lamb, mushrooms and sweet red peppers.

▶ 92 pts

JAMESSUCKLING.COM



GLOBAL VINEYARD IMPORTERS
BERKELEY, CA 510-527-5877
WWW.GLOBALVINEYARD.COM

DOMUS AURREA